

Sheltered Info:

Unsheltered Info:

Sheltered Specifications

Model	S-145	S-275	S-345
Ht. (to peak of roof)	67"	67"	67"
Length w/fan	72"	72"	84"
Width	48"	48"	48"
Fire Chamber (L)	42"	42"	55 1/2"
Fire Chamber Dia.	25"	32 1/2"	32 1/2"
Door Opening	16" x 20"	19 1/2" x 25"	19 1/2" x 25"
Water Capacity	48 gal.	59 gal.	76 gal.
Flue Size	6"	6"	6"
Weight	1080 lbs.	1350 lbs.	1590 lbs.

Unsheltered Specifications

Model	145	275	345
Height	46"	57 1/2"	57 1/2"
Length w/fan	58"	58"	73"
Width	30"	38 1/2"	38 1/2"
Fire Chamber (L)	42"	42"	55 1/2"
Fire Chamber Dia.	25"	32 1/2"	32 1/2"
Door Opening	16" x 20"	19 1/2" x 25"	19 1/2" x 25"
Water Capacity	48 gal.	59 gal.	76 gal.
Flue Size	6"	6"	6"
Weight	630 lbs.	900 lbs.	1050 lbs.

Eco-One

Eco-One Sheltered Specifications

Model	eS-145	eS-275	eS-345
Ht. (to peak of roof)	67"	67"	67"
Length w/fan	82"	82"	94"
Width	48"	48"	48"
Fire Chamber (L)	42"	42"	55 1/2"
Fire Chamber Dia.	25"	32 1/2"	32 1/2"
Door Opening	16" x 20"	19 1/2" x 25"	19 1/2" x 25"
Water Capacity	48 gal.	59 gal.	76 gal.
Flue Size	6"	6"	6"
Weight	1100 lbs.	1370 lbs.	1610 lbs.

Eco-One

Eco-One Unsheltered Specifications

Model	e145	e275	e345
Height	46"	57 1/2"	57 1/2"
Length w/fan	68"	68"	83"
Width	30"	38 1/2"	38 1/2"
Fire Chamber (L)	42"	42"	55 1/2"
Fire Chamber Dia.	25"	32 1/2"	32 1/2"
Door Opening	16" x 20"	19 1/2" x 25"	19 1/2" x 25"
Water Capacity	48 gal.	59 gal.	76 gal.
Flue Size	6"	6"	6"
Weight	650 lbs.	920 lbs.	1070 lbs.

REDUCED EMISSIONS

REDUCED EMISSIONS

Optional Accessories

- Domestic Water Heating Package
- Smoke Exhaust System (*unsheltered units only*)
- Electric Boilers for Secondary Heat Source available.
- 1/2" Aqua-Therm Composite Tubing for Radiant Floor Heating
- 1" I.D. Aqua-Therm Composite Tubing
- Preformed Pipe Insulation
- Compression Fittings for 1" tubing
- Boiler Anti-Freeze
- Ball Valves for System Isolation

Coal Burning Option



Aqua-Therm offers a firebrick lined firebox with cast iron shaker grates, suitable for all your multi-fuel needs.

Energy Transfer Pipe

Flexsul-Seal Energy Transfer Pipe



Flexsul-Seal Advantages

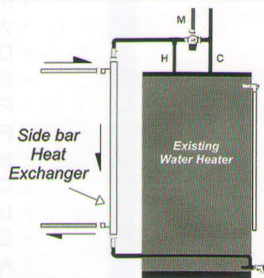
- Lightweight - Easier Handling
- High Flexibility
- 5" I.D. - Increased Insulation Protection

Domestic Hot Water

Attached to an existing water heater, this double-wall heat exchanger provides hot water for household use:

Advantages are:

- Boiler water never mixes with domestic water.
- No need to run an extra set of pipes between the boiler and the house.
- Can be used year-round.

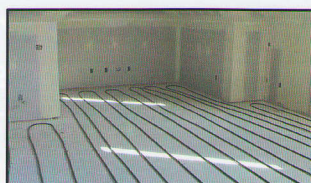


Pex-Al-Pex Tubing

Eco-One cross linked polyethylene (Pex-Al-Pex®) tubing has an aluminum oxygen barrier, making it an excellent product to use as supply and return lines to the wood boiler. The tubing also performs very well in a hydronic radiant floor heating system.

Advantages are:

- The aluminum allows for easy bending and will retain the desired shape.
- High temperature and pressure rating.
- 100% oxygen barrier=longer life for pumps and heating components.
- Minimal heat expansion
- No special tools required for brass compression fittings.



AQUA-THERM WOOD BURNING APPLIANCE QUOTE

Model:	_____	\$ _____
Optional Accessories:	_____	\$ _____
	_____	\$ _____
	_____	\$ _____
	_____	\$ _____
	_____	\$ _____
Delivery Costs:	_____	\$ _____
Sub-Total:	_____	\$ _____
Tax:	_____	\$ _____
Total:	_____	\$ _____

Call for design assistance and system pricing.

Financing Available at Participating U.S. Dealers

Your Authorized Dealer:

